

2025 7th "Boyi Cup" China Youth Chess International Open

I. Main ORGANIZER

Chess and Card sports Management Center of General Administration of Sports of China

China Chess Association

II. ORGANIZER

Heilongjiang Chess and Card Sports Management Center

Heilongjiang Chess and Card Association

Harbin Xiangfang Chess Association

III. CO-ORGANIZER

Daqing Sports Bureau

Heilongjaing Boyi CHess club

IV. DATE

Registration date: 2025.07.30

Competition date: 2025.07.31-2025.08.04

Date	Content	Time
7.30	Registration	
	Technical meeting	20:00
7.31	Opening ceremony	8:00
	1 st round	8:30
	2 nd round	14:30
8.1	3 rd round	8:30
	4 th round	14:30
8.2	5 th round	8:30
	6 th round	14:30
8.3	7 th round	8:30
	8 th round	14:30
8.4	9 th round	8:30
	Closing ceremony	13:00
	departure	

V. LOCATION

China, Heilongjiang, Daqing

Address: Hao Fang Novotel, Daqing

No. 2 Longxiang Road, Longfeng District, Daqing City, Heilongjiang Province, China

VI. COMPETITION EVENTS

Chess Individual Tournament

VII. PARTICIPANTS

(1) Chess players under the age of 25 (inclusive) (born after 1st June 2000) from all member countries of the World Chess Federation (FIDE), sex not limited;

(2) Group A: Chess players from all member countries of the International Chess Federation (FIDE) who are under 25 years old (including 25 years old) and have an international rating of more than 1900 points, regardless of gender.

(2) Group B: Chess players from all member countries of the International Chess Federation who are under 25 years old (including 25 years old) and have an international rating of less than or equal to 2000 points, regardless of gender.

VIII. COMPETITION METHOD

1. This competition adopts the latest rules of the World Chess Federation (FIDE) and calculates international rating points(Elo).

2. Rules: Both Group A and B shall be conducted as a Swiss System of 9 rounds. The time control is 90 minutes with an addition of 30 seconds per move starting from move one for Group A; 60 minutes with an addition of 30 seconds per move starting from move one for Group B.

IX. AWARDS

1. The total prize money for this competition is CNY 104,000 (pre-tax). 20% of the individual prize money will be deducted for tax, and the prize money will be shared equally among players with the same points.

2. champions of Open Group A, Open Group B, and the Best Female Player will each be awarded a trophy. The top eight players in each group will receive certificates. The top three players of Open Group B will qualify for the Open Group A of the 8th "Boyi Cup" China Youth Chess International Open Tournament in 2026.

3. details

Open group A

Rank	Price
1 st	RMB 20,000+trophy+certificate
2 nd	RMB 15,000+certificate
3 rd	RMB 8,000+certificate
4 th	RMB 5,000+certificate
5 th	RMB 4,000+certificate
6 th	RMB 3,000+certificate
7 th	RMB 2,000+certificate
8 th	RMB 1,500+certificate
9 th -16 th	RMB 1,000 each

Best female players in Open Group A	
Rank	Price
1 st	RMB 3,000+trophy+certificate
2 nd	RMB 2,000+certificate
3 rd	RMB 1,000+certificate

Open group B	
Rank	Price
1 st	RMB 8,000+trophy+certificate
2 nd	RMB 5,000+certificate
3 rd	RMB 3,000+certificate
4 th	RMB 2,000+certificate
5 th	RMB 1,500+certificate
6 th	RMB 1,000+certificate
7 th	RMB 800+certificate
8 th	RMB 700+certificate
9 th -16 th	RMB 500 each
17 th - 24 th	RMB 400 each

Best female players in Open Group B	
Rank	Price
1 st	RMB 1,000+trophy+certificate
2 nd	RMB 800+certificate
3 rd	RMB 500+certificate

Open Group A: If there are fewer than 20 participants in Group A, the top 4 will receive prize money; if there are fewer than 50 participants, the top 8 will receive prize money. If the number of female payers is less than 8, the top 2 will receive prize money; If the number of female payers is less than 4, only top 1 can receive prize money.

Open Group B: If there are fewer than 80 participants in Group B, the top 24 will receive prize money; if there are fewer than 60 participants, the top 18 will receive prize money; if there are fewer than 40 participants, the top 12 will receive prize money. If the number of female payers is less than 8, the top 2 will receive prize money; If the number of female payers is less than 4, only top 1 can receive prize money.

X. ARBITRAGE

1. Arbiters

The Chief Arbiter, Deputy Chief Arbiter, Chief Organizer, and Chairman of the Appeals Committee, as well as key arbiters, shall be appointed by the Chinese Chess Association. Other arbiters shall be selected by the organizer based on the principle of efficiency and actual needs.

2. Appeals

(1)The Appeals Committee shall consist of: 1 representative recommended by the main-organizer; 1 representative recommended by the co-organizer; 1 representative elected by the players; and 2 alternate members.

(2) During the tournament, all appeals must be submitted in writing to the Appeals Committee within 1 hour after the completion of the relevant round. Each appeal must be accompanied by a fee of RMB 2,000. If the appeal is rejected, the fee will not be refunded. If any member of the Appeals Committee shares the same provincial affiliation as one of the disputing parties, that member shall recuse themselves from

the ruling.

3. Tournament Discipline

Any violations of tournament discipline and conduct during the event shall be handled in accordance with the Chinese Chess Association Disciplinary Guidelines and Penalty Regulations (2024 Edition) (Document No. 7, 2024).

XI. FUNDING

1. The organizing committee will cover expenses related to competition, venue, publicity, referees, reception, awards, etc.

2. Tournament Service Fees

(1) Players with an international rating of 2400 or above are exempt from the tournament service fee.

(2) Players with an international rating below 2400 (inclusive) will be charged \$50 or ¥350 per person.

(3) Unrated players will be charged \$80 or ¥560 per person (covering competition venue, equipment, and staff costs).

(4) Personal insurance fee: ¥10.

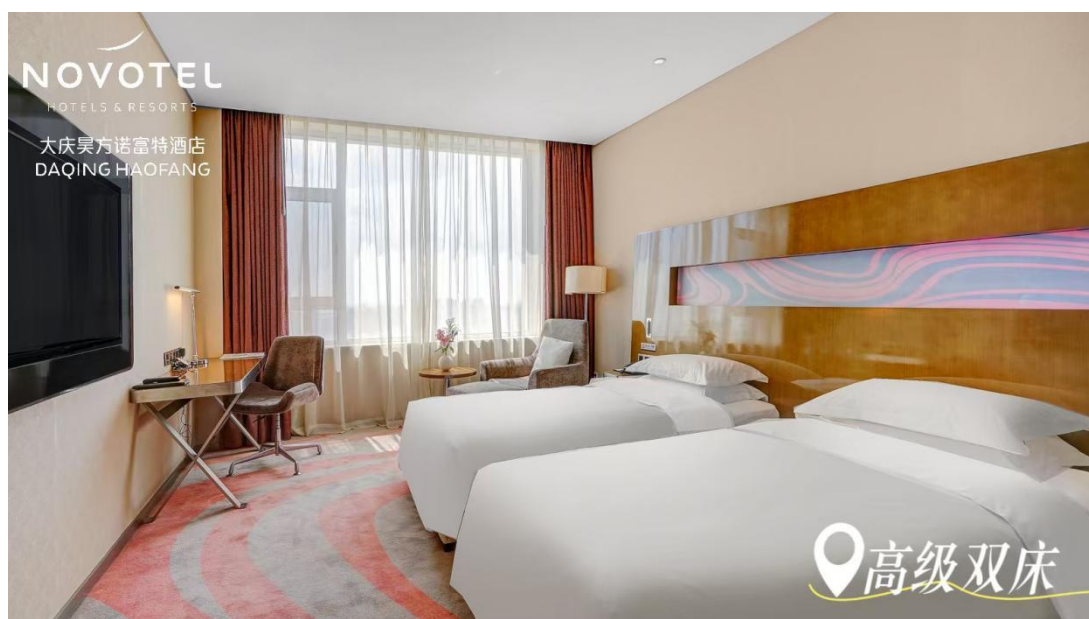
3. All participants are responsible for their own transportation, accommodation, and meals, **exception for the 6 registered participants from each foreign federation who can enjoy the free full accommodations provided by organizer in official hotel(twin-room basis).**

4. Meal and accommodation fees will be calculated as a package; no partial refunds will be issued.

The package fee includes accommodation and meals:

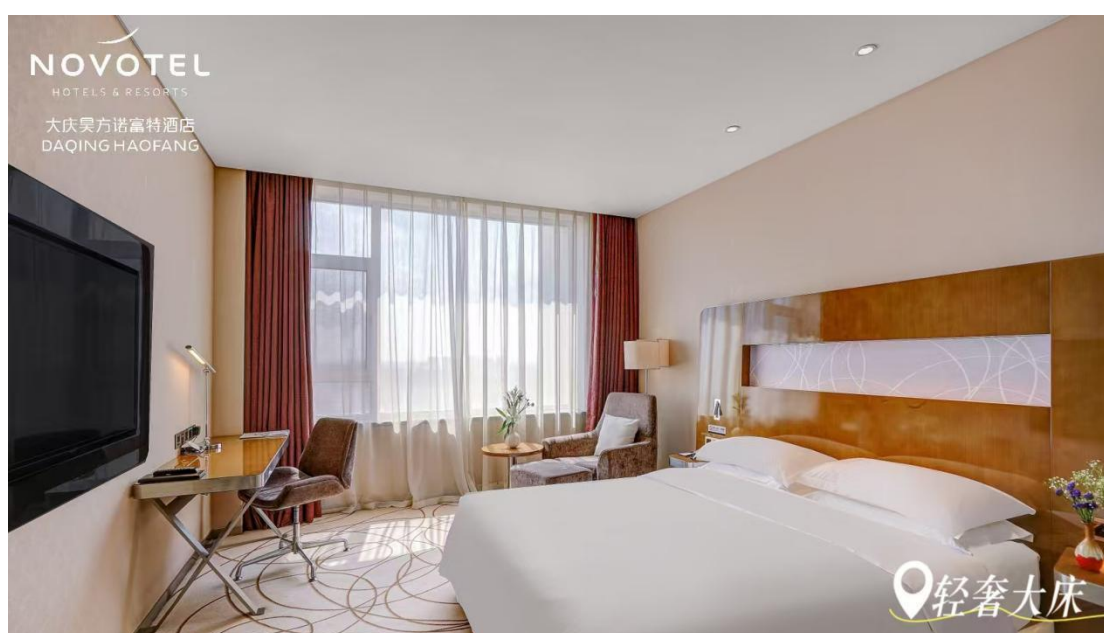
Standard Room with two beds : ¥2,300 per person (full package)

Early Bird Rate (before May 30, 2025, based on payment receipt time): ¥2,150 per person



Single Room with king-size bed: ¥3,300 per person (full package)

Early Bird Rate (before May 30, 2025, based on payment receipt time): ¥3,150 per person



5. The organizing committee will arrange accommodation for participants from 2:00 PM on July 30, 2025, to 2:00 PM on August 4, 2025, and meals (dinner on July 30 to lunch on August 4), all served as buffets.

6. Participants are responsible for their own travel expenses. If airport or train station pickup is required, please contact the organizing committee in advance.

7. Payment Methods

Account: Bank of China Dongli Sub-branch 6217865300000487662

BANK OF CHINA HEILONGJIANG BRANCH DONGLI SUB-BRANCH,

remittance address: No.162-1 Zhongshan Road, Xiangfang District, Harbin.

Bank Code: BKCHCNBJ860

Consultation Phone: +86(0)451-82647754

Please confirm the payment with the recipient immediately after remittance, and retain the payment receipt for accommodation and meal arrangements.

XII. REGISTRATION & CHECK-IN

1. Registration Timeline & Requirements

(1) Deadline: Registration closes at 18:00 (6:00 PM) on June 30, 2025.

Submit the fully and accurately completed Entry Form (Attachment 1) as an email attachment to: chessby@163.com before the deadline. Late submissions will be considered withdrawn. If no confirmation email is received within 24 hours of submission, promptly contact the Organizing Committee.

(2) Payment: Within 24 hours after email registration, transfer the full accommodation & meal fees to the designated account. Late payments will result in cancellation of registration.

(3) FIDE ID Requirement: Provide your FIDE ID during registration. Unregistered players must apply for a FIDE ID through the Organizing Committee (Attachment 3). Submit the completed form alongside the stamped Entry Form via email. On-site registration is NOT permitted.

(4) Insurance: The event will arrange personal accident insurance for all players. Ensure all fields in the Entry Form are meticulously filled.

2. On-site Check-in

Bring the following original documents for verification:

Stamped Entry Form (Attachment 1)

Waiver of Liability & Risk Acknowledgement Form (Attachment 2)

Payment receipt

XIII. CONTACT INFORMATION

Contact: Mr. Cui

Tel: 0451-51019777 / 15045108111

Email: chessby@163.com

XIV. ADDITIONAL NOTICES

Matters not covered herein will be announced separately.

XV. INTERPRETATION RIGHTS

The Chinese Chess Association reserves the right of final interpretation of these regulations.